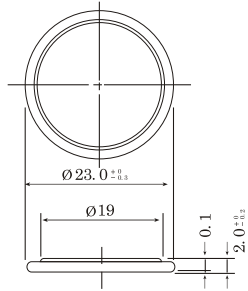
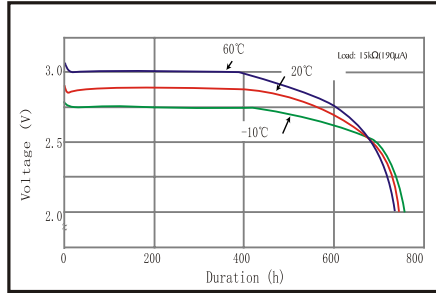


CR2320

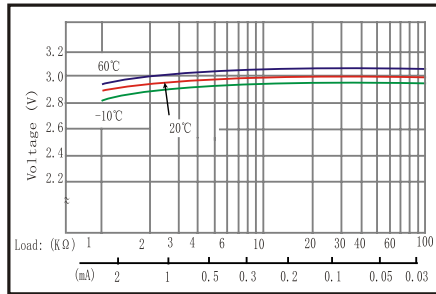
Dimensions(mm)



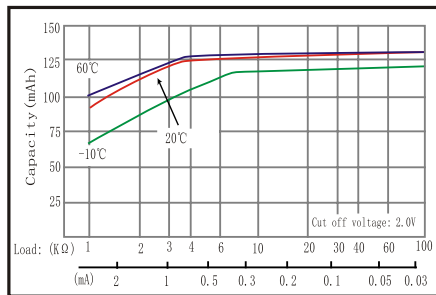
1. TEMPERATURE CHARACTERISTICS



2. OPERATING VOLTAGE VS. LOAD RESISTANCE



3. CAPACITY VS. LOAD RESISTANCE



Nominal capacity 15k Ω -2.0V	150mAh
Nominal voltage	3.0V
Max. constant current	6mA
Max. pulse current	25mA
Operating temperature	-20~+70 $^{\circ}$ C
Weight	2.9g

WARNING

- Forbid short-circuit, charge between "+" and "-".
- Forbid over-discharge, fire, damage.
- Avoid to solder directly to batteries
- Take out the battery when discharging to cut-off voltage, and embedding it under ground or jump in the deep water.

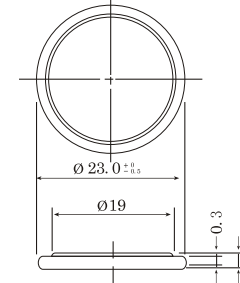
EVE ENERGY CO., LTD.
 Address: EVE Industrial Park, XiKeng Industrial zone, Huihuan Town, Huizhou, Guangdong, China
 Operator: (86-752)260 6966 Direct: (86-752)261 0582
 Fax: (86-752)260 6033 P.C.516006

<http://www.evebattery.com> Email: sales@evebattery.com

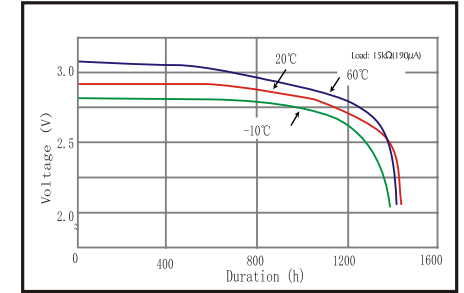
Latest version can be downloaded from the EVE website
 2010-03

CR2330

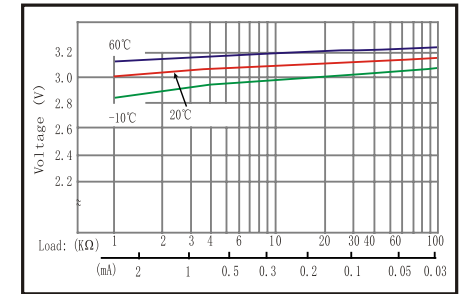
Dimensions(mm)



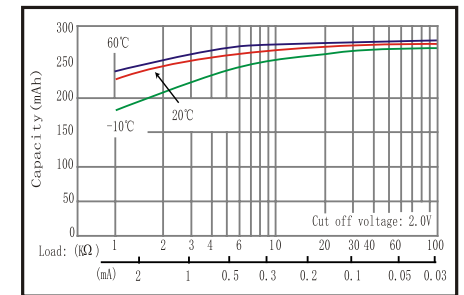
1. TEMPERATURE CHARACTERISTICS



2. OPERATING VOLTAGE VS. LOAD RESISTANCE



3. CAPACITY VS. LOAD RESISTANCE



Nominal capacity 15k Ω -2.0V	255mAh
Nominal voltage	3.0V
Max. constant current	6mA
Max. pulse current	25mA
Operating temperature	-20~+70 $^{\circ}$ C
Weight	4.0g

WARNING

- Forbid short-circuit, charge between "+" and "-".
- Forbid over-discharge, fire, damage.
- Avoid to solder directly to batteries
- Take out the battery when discharging to cut-off voltage, and embedding it under ground or jump in the deep water.

EVE ENERGY CO., LTD.
 Address: EVE Industrial Park, XiKeng Industrial zone, Huihuan Town, Huizhou, Guangdong, China
 Operator: (86-752)260 6966 Direct: (86-752)261 0582
 Fax: (86-752)260 6033 P.C.516006

<http://www.evebattery.com> Email: sales@evebattery.com

Latest version can be downloaded from the EVE website
 2010-03