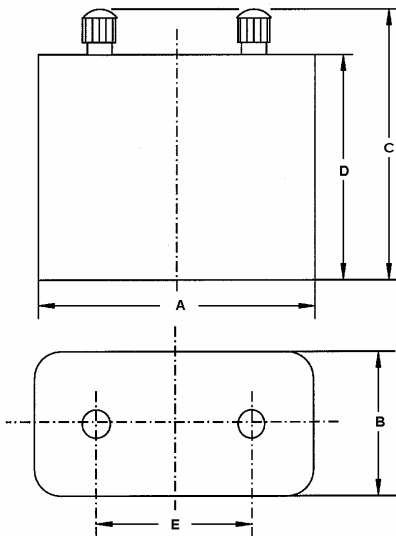


Recommended Application

Lighting

Type Designation	435
Designation IEC	4LR25-2
System	Zn-MnO ₂ (Alcaline)
Shelf Life (Coding)*	5 years
Nominal Voltage [V]	6
Typical Capacity C [mAh]	33 000 (discharge with high-resistance)
Permissible Temperature Range	- 10 °C ... 50 °C
Weight, approx. [g]	1265
Volume [ccm]	1120



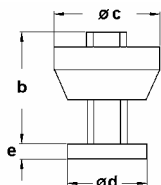
Dimensions [mm]

min: max:

A	132.5	136.5
B	69.0	73.0
C	-	127.0
D	109.5	114.0
E	75.2	77.0

Screw terminal [mm]

b min	8	or 15
c max	12	or 14
d min	7	or 12
e	2.5	
Threaded	4.2	



Typical Capacities (at 20°C)

Discharge Type	Load	End Voltage[V]	4.4	3.6
Portable Lighting	8.2 Ω	Time [min]	1800	2590
		Capacity [Ah]	18.50	24.80
		Energy [Wh]	88	116
30m/d, 7d/w	8.2 Ω	Time [min]	2112	2970
		Capacity [Ah]	18.50	25.20
		Energy [Wh]	92	118
30m/h, 8h/d, 7d/w	110 Ω	Time [h]	556	790
		Capacity [Ah]	26.50	35.20
		Energy [Wh]	141	173

* In consideration of typical loss of capacity at storage and application.